

Solution: Remote Management

Country: Sweden

Company: Pahlén AB

Benefits

- Online access to water
- Quality, pH levels, chlorine and levels etc
- Alarms whenever certain thresholds are reached - faster problem resolution
- Different access levels for different users



"The Netbiter solution has certainly given us a competitive advantage as we can offer online access to pool information to both resellers and end customers."

Gunnar Samuelsson
Marketing Manager,
Pahléns AB.

Industrial Internet of Things by the pool

Swedish Pahlén AB can check the status of their pool systems without getting their feet wet. "How can we allow our customers to check the status of their pools without actually being there?" This was the question that led Swedish pool equipment manufacturer Pahlén to the Netbiter Remote Management solution. After a very clever implementation project, Pahlén can now offer online access to their pool equipment giving customers full control of the water quality and status of their pools, wherever they are.

Pahlén AB delivers premium pool equipment such as pumps, filters, heaters, and dosing devices to their customers around the world. For their customers in Europe, Russia and the Middle East, Pahlén has developed the Autodos measuring and control unit which continuously monitors pool water quality and automatically controls disinfection and pH levels. Through the use of automatic dosing, the chemical consumption is controlled and kept to a minimum.

"The Autodos system is mainly used for commercial swimming pools and is now a proven and trusted system for measuring and dosing," says Gunnar Samuelsson, Marketing Manager at Pahléns. "For the third generation of the Autodos system, we needed a way to access the values in Autodos without actually being on site – that's how we came across the Netbiter solution from HMS."

Pahléns wanted to give users the same experience on screen as they would if they were in front of the Autodos control panel. Netbiter was a very good fit since it has a configurable user interface where you can insert your own pictures and create a tailor-made dashboard which looks similar to the Autodos HMI.

From pool to the Internet – How it works

A Netbiter gateway is connected to the Autodos system via an RS485 connection. The

gateway sends data from the pool system to the Netbiter Argos Data Service via Ethernet or the cellular network.

Since the Autodos systems are usually installed in public swimming pools, it is often possible to connect the Netbiter gateway to an Ethernet network. But in certain cases, when the customer cannot offer a network connection, the gateway can still send and receive data via the cellular network.

In the web-based dashboard at www.netbiter.net, users see exactly what they would see on the Autodos display. This graphical recognition makes it easy to view and understand values and parameters.

The system can also send alarms via email or text messages when pH or chlorine values reach certain levels. It is then possible for maintenance staff to go in and remotely block further dosing to the pool.

User-specific access rights

Pahléns can offer different access levels to the online system so that the end customer can log in and view certain parameters, while the resellers and maintenance staff can do a bit more. This makes it possible to offer correct and accurate information to the right people and guide alarms and warnings to service staff.

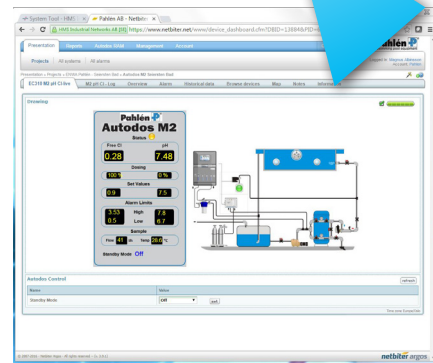
Included in the Pahléns offering Pahléns has chosen to include Netbiter gateways in their own offering making them a one-stop-shop for pool monitoring.

They call the solution Autodos RAM (Remote Access Monitoring) and offers this as an add-on service to their pool equipment. Since Pahlén offers premium pool solutions with a focus on quality, The Autodos RAM give their demanding customers extra value.

“The Netbiter solution has certainly given us a competitive advantage as we can offer online access to pool information to both resellers and end customers,” says Gunnar Samuelsson. “We can preconfigure our systems and then offer the correct information to the right people, regardless of where they are located.”



Pahlén's Autodos with Netbiter gateway.



Online access at www.netbiter.net



What Industrial IoT looks like

An example of a dashboard that customers can see when logging into www.netbiter.net. The schematic picture of the pool system contains live parameters from the actual pool measured by the Autodos system.