

Configuration

About the IPconfig utility

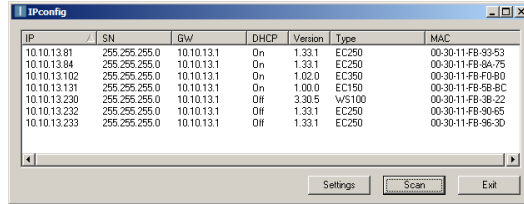
IPconfig is a PC-based configuration utility to set TCP/IP network settings in the Netbiter. It scans the network for connected Netbiter devices and lets the user set the IP address, net mask, gateway, DNS and hostname for each unit.

Installation Procedure

Download and run the self-extracting installation file from www.netbiter.com/support

Scanning for connected devices

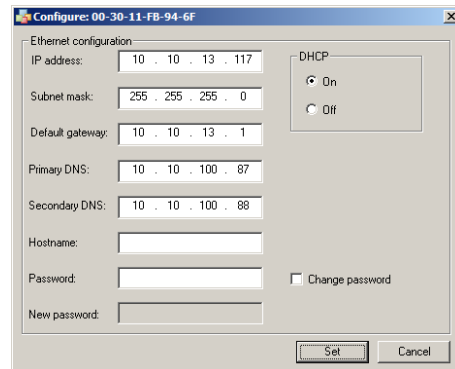
Ensure that the Netbiter units to be installed are connected on the same Ethernet network as the PC running IPconfig. Use standard Ethernet cables, straight-through or crossover. When the IPconfig utility is started it will scan the Ethernet network for Netbiter devices. All detected devices will be presented in a list in the main window. To start a new scan for devices, click the **Scan** button.



IP	SN	GW	DHCP	Version	Type	MAC
10.10.13.81	255.255.255.0	10.10.13.1	On	1.33.1	EC250	00-30-11-FB-93-53
10.10.13.84	255.255.255.0	10.10.13.1	On	1.33.1	EC250	00-30-11-FB-9A-75
10.10.13.102	255.255.255.0	10.10.13.1	On	1.02.0	EC350	00-30-11-FB-FB-80
10.10.13.131	255.255.255.0	10.10.13.1	On	1.00.0	EC150	00-30-11-FB-9B-6C
10.10.13.230	255.255.255.0	10.10.13.1	Off	3.30.5	WS100	00-30-11-FB-3B-22
10.10.13.232	255.255.255.0	10.10.13.1	Off	1.33.1	EC250	00-30-11-FB-90-65
10.10.13.233	255.255.255.0	10.10.13.1	Off	1.33.1	EC250	00-30-11-FB-96-30

Changing IP settings

To change the IP settings for a detected device, double-click the device in the list. This opens a dialog in which the required IP configuration can be made.



Configure: 00-30-11-FB-94-6F

Ethernet configuration

IP address: 10 . 10 . 13 . 117

Subnet mask: 255 . 255 . 255 . 0

Default gateway: 10 . 10 . 13 . 1

Primary DNS: 10 . 10 . 100 . 87

Secondary DNS: 10 . 10 . 100 . 88

Hostname:

Password:

New password:

DHCP: On Off

Change password

Set Cancel

IMPORTANT! Do not select the DHCP option if there is no DHCP server available on the network.

The default password for authentication of the new settings is **admin**. Clicking **Set** will cause the Netbiter to reboot, after which the new settings will be enabled.

IMPORTANT! For security reasons, the default password must be changed. See the user manual.

The new settings can be tested by opening a web browser and entering the IP address as configured above. To discover the device's IP address when using DHCP - start a new scan with the Netbiter Config utility to view the new network configuration information.

Technical Data

Power Supply
9-24 V DC (3 W)

Temperature range
Operating: -30°C to +65°C
Storage: -40°C to +85°C

Humidity range
5-95% RH, non-condensing

Mounting option
DIN rail (EN 50022)

Dimensions (HxWxD)
57,7mm x 70,0mm x 86,0mm



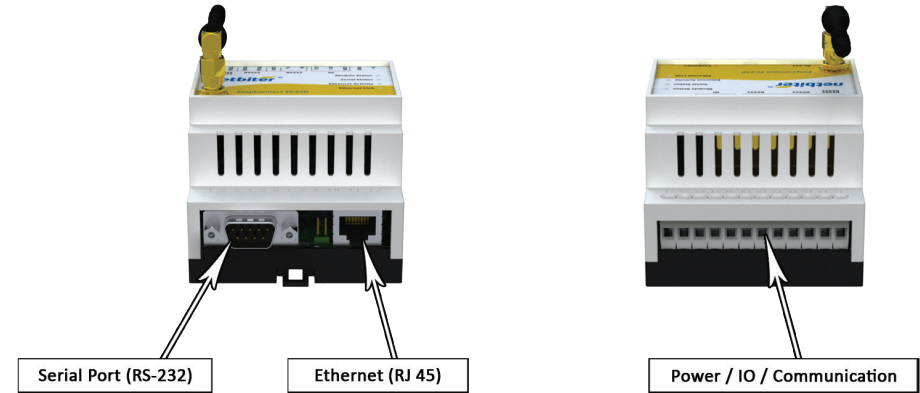
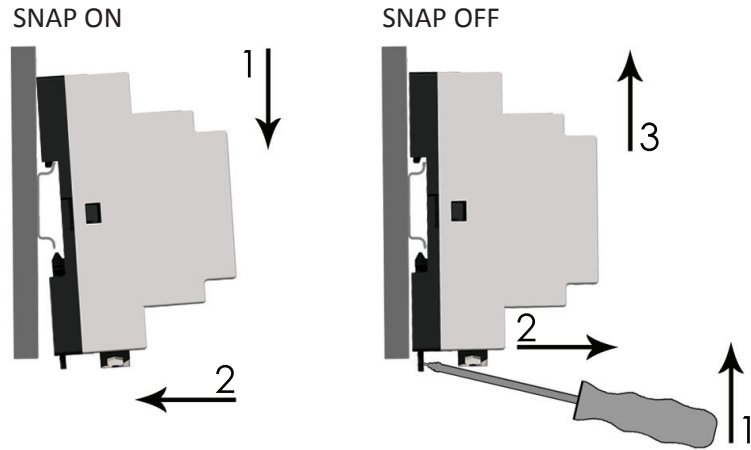
Netbiter® WS200 Installation Guide



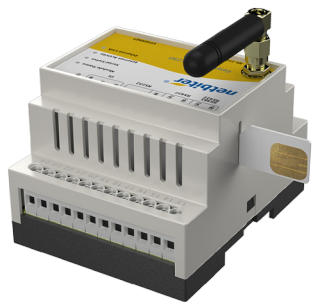
HMS Industrial Networks AB
Box 4126
300 04 Halmstad
Sweden

Phone +46 (0)35 - 17 29 00
Fax +46 (0)35 - 17 29 09
E-mail info@hms.se
Web www.hms.se

DIN Rail Mounting



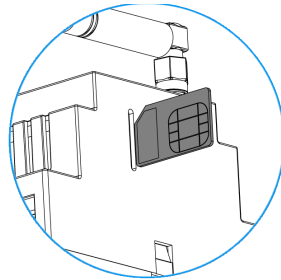
Insert SIM card



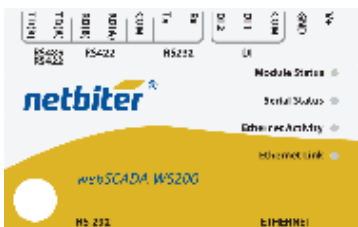
The SIM card should be pushed into the slot on the side of the unit, with the gold plated side oriented as shown here.

When fully inserted the SIM card will lock into place.

To extract the SIM card, press again to release.



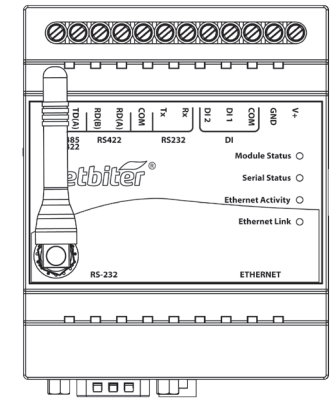
LED Descriptions



LED Name	Color	Function
Module Status	OFF	No power
	Green	Steady – Module is running in normal mode
Serial Status	Green	Flashing – Serial Packet receive
	Red	Flashing – Serial Packet transmit
Ethernet Activity	Green	Flashing – Packet receive
Ethernet Link	Green	Steady – Ethernet network detected, 10Mbps
	Orange	Steady – Ethernet network detected, 100Mbps

Power / IO / Communication

Pin	Description
TD(B)	RS-485 Line B / RS-422 Transmit B
TD(A)	RS-485 Line A / RS-422 Transmit A
RD(B)	RS-422 Receive B
RD(A)	RS-422 Receive A
COM	Common
Tx	RS-232 Transmit
Rx	RS-232 Receive
DI 2	Digital Input 2 + (10-24VDC)
DI 1	Digital Input 1 + (10-24VDC)
COM	Digital Input Common
GND	OV / GND
V+	9 – 24 VDC



Field wiring terminals shall be connected with minimum wire size 24 AWG.

Serial Port

Pin	Description
1	CD (Carrier Detect)
2	Rx (Receive)
3	Tx (Transmit)
4	DTR (Data Terminal Ready)
5	GND
6	DSR
7	RTS (Request To Send)
8	CTS (Clear To Send)
9	RI (Ring Indicator)

